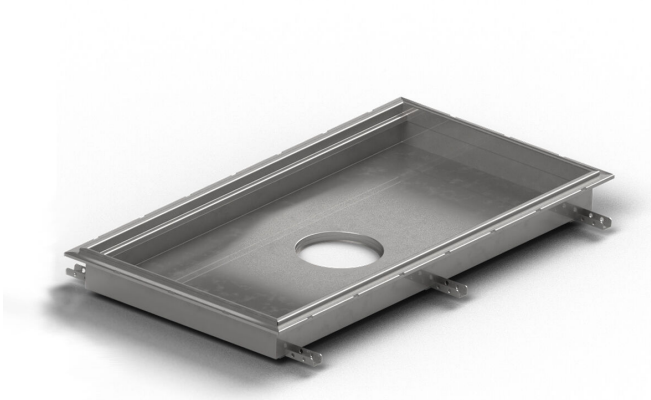


RSK 7098799



Purus channel volume for tile floors with glue flange is a floor channel made of acid-resistant stainless steel for installation in concrete. The floor channel is 400x400x100 mm med ett mittplacerat utlopp och är avsedd för klinkergolv som ytskikt. The floor channel needs to be supplemented with grid depending on the environment and outlet house in acid-resistant stainless steel. Purus channel volume is adapted for environments with requirements for hygiene, has a large volume and high flow capacity.

RSK 7098800

Purus channel volume for tile floors with glue flange is a floor channel made of acid-resistant stainless steel for installation in concrete. The floor channel is 600x400x100 mm med ett mittplacerat utlopp och är avsedd för klinkergolv som ytskikt. The floor channel needs to be supplemented with grid depending on the environment and outlet house in acid-resistant stainless steel. Purus channel volume is adapted for environments with requirements for hygiene, has a large volume and high flow capacity.

RSK 7098801

Purus channel volume for tile floors with glue flange is a floor channel made of acid-resistant stainless steel for installation in concrete. The floor channel is 900x600x100 mm with a mid outlet and is intended for tiled flooring. The floor channel needs to be supplemented with grid depending on the environment and outlet house in acid-resistant stainless steel. Purus channel

volume is adapted for environments with requirements for hygiene, has a large volume and high flow capacity.

RSK 7098802

Purus channel volume for tile floors with glue flange is a floor channel made of acid-resistant stainless steel for installation in concrete. The floor channel is 800x500x100 mm with a mid outlet and is intended for tiled flooring. The floor channel needs to be supplemented with grid depending on the environment and outlet house in acid-resistant stainless steel. Purus channel volume is adapted for environments with requirements for hygiene, has a large volume and high flow capacity.

RSK 7098798

Purus channel volume for tile floors with glue flange is a floor channel made of acid-resistant stainless steel for installation in concrete. The floor channel is 500x300x50 mm with a mid outlet and is intended for tiled flooring. The floor channel needs to be supplemented with grid depending on the environment and outlet house in acid-resistant stainless steel. Purus channel volume is adapted for environments with requirements for hygiene, has a large volume and high flow capacity.

RSK 7098803

Purus channel volume for tile floors with glue flange is a floor channel made of acid-resistant stainless steel for installation in concrete. The floor channel is 300x300x200 mm with a mid outlet and is intended for tiled flooring. The floor channel needs to be

supplemented with grid depending on the environment and outlet house in acid-resistant stainless steel. Purus channel volume is adapted for environments with requirements for hygiene, has a large volume and high flow capacity.

RSK 7098804

Purus channel volume for tile floors with glue flange is a floor channel made of acid-resistant stainless steel for installation in concrete. The floor channel is 500x300x200 mm with a mid outlet and is intended for tiled flooring. The floor channel needs to be supplemented with grid depending on the environment and outlet house in acid-resistant stainless steel. Purus channel volume is adapted for environments with requirements for hygiene, has a large volume and high flow capacity.

RSK 7098805

Purus channel volume for tile floors with glue flange is a floor channel made of acid-resistant stainless steel for installation in concrete. The floor channel is 800x500x200 mm with a mid outlet and is intended for tiled flooring. The floor channel needs to be supplemented with grid depending on the environment and outlet house in acid-resistant stainless steel. Purus channel volume is adapted for environments with requirements for hygiene, has a large volume and high flow capacity.

RSK 7098806

Purus channel volume for tile floors with glue flange is a floor channel made of acid-resistant stainless steel for installation in

concrete. The floor channel is 1000x300x50 mm with a mid outlet and is intended for tiled flooring. The floor channel needs to be supplemented with grid depending on the environment and outlet house in acid-resistant stainless steel. Purus channel volume is adapted for environments with requirements for hygiene, has a large volume and high flow capacity.

RSK 7098807

Purus channel volume for tile floors with glue flange is a floor channel made of acid-resistant stainless steel for installation in concrete. The floor channel is 1200x600x100 mm with a mid outlet and is intended for tiled flooring. The floor channel needs to be supplemented with grid depending on the environment and outlet house in acid-resistant stainless steel. Purus channel volume is adapted for environments with requirements for hygiene, has a large volume and high flow capacity.

RSK 7103076

Purus channel volume for tile floors with glue flange is a floor channel made of acid-resistant stainless steel for installation in concrete. The floor channel is 900x600x200 mm with a mid outlet and is intended for tiled flooring. The floor channel needs to be supplemented with grid depending on the environment and outlet house in acid-resistant stainless steel. Purus channel volume is adapted for environments with requirements for hygiene, has a large volume and high flow capacity.

RSK Number	7098799
Construction Height	110
Electrical Data	15 l
Floor Construction	Concrete flooring
Floor Covering	Tile floor with glueing flange
Function	Central outlet
Item Color	Stainless
Material	Acid-resistant stainless steel 1.4404
Outlet Dimension	Side/bottom in stainless steel in Ø75/Ø110 mm
Size	400x400x100 mm
Surface	Pickled
Version	Do not forget grid/outlet house

RSK Number	7098800
Construction Height	110
Electrical Data	23 l
Floor Construction	Concrete flooring
Floor Covering	Tile floor with glueing flange
Function	Central outlet

Item Color	Stainless
Material	Acid-resistant stainless steel 1.4404
Outlet Dimension	Side/bottom in stainless steel in Ø75/Ø110 mm
Size	600x400x100 mm
Surface	Pickled
Version	Do not forget grid/outlet house

RSK Number	7098801
-------------------	---------

Construction Height	110
----------------------------	-----

Electrical Data	51 l
------------------------	------

Floor Construction	Concrete flooring
---------------------------	-------------------

Floor Covering	Tile floor with glueing flange
-----------------------	--------------------------------

Function	Central outlet
-----------------	----------------

Item Color	Stainless
-------------------	-----------

Material	Acid-resistant stainless steel 1.4404
-----------------	---------------------------------------

Outlet Dimension	Side/bottom in stainless steel in Ø75/Ø110 mm
-------------------------	---

Size	900x600x100 mm
-------------	----------------

Surface	Pickled
----------------	---------

Version	Do not forget grid/outlet house
----------------	---------------------------------

RSK Number	7098802
Construction Height	110
Electrical Data	38 I
Floor Construction	Concrete flooring
Floor Covering	Tile floor with glueing flange
Function	Central outlet
Item Color	Stainless
Material	Acid-resistant stainless steel 1.4404
Outlet Dimension	Side/bottom in stainless steel in Ø75/Ø110 mm
Size	800x500x100 mm
Surface	Pickled
Version	Do not forget grid/outlet house

RSK Number	7098798
Construction Height	60
Floor Construction	Concrete flooring
Floor Covering	Tile floor with glueing flange
Function	Central outlet
Item Color	Stainless

Material	Acid-resistant stainless steel 1.4404
Outlet Dimension	Side/bottom in stainless steel in Ø75/Ø110 mm
Size	500x300x50 mm
Surface	Pickled
Version	Do not forget grid/outlet house

RSK Number	7098803
-------------------	---------

Construction Height	210
----------------------------	-----

Floor Construction	Concrete flooring
---------------------------	-------------------

Floor Covering	Tile floor with glueing flange
-----------------------	--------------------------------

Function	Central outlet
-----------------	----------------

Item Color	Stainless
-------------------	-----------

Material	Acid-resistant stainless steel 1.4404
-----------------	---------------------------------------

Outlet Dimension	Side/bottom in stainless steel in Ø75/Ø110 mm
-------------------------	---

Size	300x300x200 mm
-------------	----------------

Surface	Pickled
----------------	---------

Version	Do not forget grid/outlet house
----------------	---------------------------------

RSK Number	7098804
-------------------	---------

Construction	210
---------------------	-----

Height	
Floor Construction	Concrete flooring
Floor Covering	Tile floor with glueing flange
Function	Central outlet
Item Color	Stainless
Material	Acid-resistant stainless steel 1.4404
Outlet Dimension	Side/bottom in stainless steel in Ø75/Ø110 mm
Size	500x300x200 mm
Surface	Pickled
Version	Do not forget grid/outlet house
RSK Number	7098805
Construction Height	210
Floor Construction	Concrete flooring
Floor Covering	Tile floor with glueing flange
Function	Central outlet
Item Color	Stainless
Material	Acid-resistant stainless steel 1.4404
Outlet Dimension	Side/bottom in stainless steel in Ø75/Ø110 mm

Size	800x500x200 mm
Surface	Pickled
Version	Do not forget grid/outlet house
RSK Number	7098806
Construction Height	60
Floor Construction	Concrete flooring
Floor Covering	Tile floor with glueing flange
Function	Central outlet
Item Color	Stainless
Material	Acid-resistant stainless steel 1.4404
Outlet Dimension	Side/bottom in stainless steel in Ø75/Ø110 mm
Size	1000x300x50 mm
Surface	Pickled
Version	Do not forget grid/outlet house
RSK Number	7098807
Construction Height	110
Floor Construction	Concrete flooring

Floor Covering	Tile floor with glueing flange
Function	Central outlet
Item Color	Stainless
Material	Acid-resistant stainless steel 1.4404
Outlet Dimension	Side/bottom in stainless steel in Ø75/Ø110 mm
Size	1200x600x100 mm
Surface	Pickled
Version	Do not forget grid/outlet house
RSK Number	7103076
Construction Height	200
Floor Construction	Concrete flooring
Floor Covering	Concrete
Function	Central outlet
Item Color	Stainless
Material	Acid-resistant stainless steel 1.4404
Outlet Dimension	Side/bottom in stainless steel in Ø75/Ø110 mm
Size	900x600x200 mm
Surface	Pickled

Version

Do not forget grid/outlet house

Dimension (mm)	LxWxH (mm)	Dimension (mm)	LxWxH (mm)
500x300x50	503 x 303 x 50	1200x600x100	1203 x 603 x 100
1000x300x50	1003 x 303 x 50	300x300x200	303 x 303 x 200
400x400x100	403 x 403 x 100	500x300x200	503 x 303 x 200
600x400x100	603 x 403 x 100	800x500x200	803 x 503 x 200
800x500x100	803 x 503 x 100		
900x600x100	903 x 603 x 100		
900x600x200	903 x 603 x 200		

