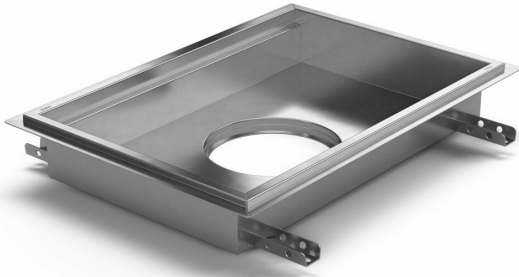


RSK 7098808



Purus channel volume for epoxy is a floor channel made of acid-resistant stainless steel for installation in concrete. The floor channel is 500x300x50 mm med ett mittplacerat utlopp och är avsedd för massagolv som ytskikt. The floor channel needs to be supplemented with grid depending on the environment and outlet house in acid-resistant stainless steel. Purus channel volume is adapted for environments with requirements for hygiene, has a large volume and high flow capacity.

RSK 7098809

Purus channel volume for epoxy is a floor channel made of acid-resistant stainless steel for installation in concrete. The floor channel is 400x400x100 mm med ett mittplacerat utlopp och är avsedd för massagolv som ytskikt. The floor channel needs to be supplemented with grid depending on the environment and outlet house in acid-resistant stainless steel. Purus channel volume is adapted for environments with requirements for hygiene, has a large volume and high flow capacity.

RSK 7098810

Purus channel volume for epoxy is a floor channel made of acid-resistant stainless steel for installation in concrete. The floor channel is 600x400x100 mm with a mid outlet and is intended for epoxy flooring. The floor channel needs to be supplemented with grid depending on the environment and outlet house in acid-resistant stainless steel. Purus channel volume is adapted for

environments with requirements for hygiene, has a large volume and high flow capacity.

RSK 7098811

Purus channel volume for epoxy is a floor channel made of acid-resistant stainless steel for installation in concrete. The floor channel is 900x600x100 mm with a mid outlet and is intended for epoxy flooring. The floor channel needs to be supplemented with grid depending on the environment and outlet house in acid-resistant stainless steel. Purus channel volume is adapted for environments with requirements for hygiene, has a large volume and high flow capacity.

RSK 7098812

Purus channel volume for epoxy is a floor channel made of acid-resistant stainless steel for installation in concrete. The floor channel is 800x500x100 mm with a mid outlet and is intended for epoxy flooring. The floor channel needs to be supplemented with grid depending on the environment and outlet house in acid-resistant stainless steel. Purus channel volume is adapted for environments with requirements for hygiene, has a large volume and high flow capacity.

RSK 7098813

Purus channel volume for epoxy is a floor channel made of acid-resistant stainless steel for installation in concrete. The floor channel is 300x300x200 mm with a mid outlet and is intended for epoxy flooring. The floor channel needs to be supplemented

with grid depending on the environment and outlet house in acid-resistant stainless steel. Purus channel volume is adapted for environments with requirements for hygiene, has a large volume and high flow capacity.

RSK 7098814

Purus channel volume for epoxy is a floor channel made of acid-resistant stainless steel for installation in concrete. The floor channel is 500x300x200 mm with a mid outlet and is intended for epoxy flooring. The floor channel needs to be supplemented with grid depending on the environment and outlet house in acid-resistant stainless steel. Purus channel volume is adapted for environments with requirements for hygiene, has a large volume and high flow capacity.

RSK 7098815

Purus channel volume for epoxy is a floor channel made of acid-resistant stainless steel for installation in concrete. The floor channel is 800x500x200 mm with a mid outlet and is intended for epoxy flooring. The floor channel needs to be supplemented with grid depending on the environment and outlet house in acid-resistant stainless steel. Purus channel volume is adapted for environments with requirements for hygiene, has a large volume and high flow capacity.

RSK 7098816

Purus channel volume for epoxy is a floor channel made of acid-resistant stainless steel for installation in concrete. The floor

channel is 1000x300x50 mm with a mid outlet and is intended for epoxy flooring. The floor channel needs to be supplemented with grid depending on the environment and outlet house in acid-resistant stainless steel. Purus channel volume is adapted for environments with requirements for hygiene, has a large volume and high flow capacity.

RSK 7098817

Purus channel volume for epoxy is a floor channel made of acid-resistant stainless steel for installation in concrete. The floor channel is 1200x600x100 mm with a mid outlet and is intended for epoxy flooring. The floor channel needs to be supplemented with grid depending on the environment and outlet house in acid-resistant stainless steel. Purus channel volume is adapted for environments with requirements for hygiene, has a large volume and high flow capacity.

Specifications

| | |
|----------------------------|-------------------|
| RSK Number | 7098808 |
| Construction Height | 50 |
| Electrical Data | 7 l |
| Floor Construction | Concrete flooring |
| Floor Covering | Resin |
| Function | Central outlet |
| Item Color | Stainless |

| | |
|----------------------------|---|
| Material | Acid-resistant stainless steel 1.4404 |
| Outlet Dimension | Side/bottom in stainless steel in Ø75/Ø110 mm |
| Size | 500x300x50 |
| Surface | Pickled |
| Version | Do not forget grid/outlet house |
| RSK Number | 7098809 |
| Construction Height | 100 |
| Electrical Data | 15 l |
| Floor Construction | Concrete flooring |
| Floor Covering | Resin |
| Function | Central outlet |
| Item Color | Stainless |
| Material | Acid-resistant stainless steel 1.4404 |
| Outlet Dimension | Side/bottom in stainless steel in Ø75/Ø110 mm |
| Size | 400x400x100 |
| Surface | Pickled |
| Version | Do not forget grid/outlet house |
| RSK Number | 7098810 |

| | |
|----------------------------|---|
| Construction Height | 100 |
| Electrical Data | 23 l |
| Floor Construction | Concrete flooring |
| Floor Covering | Resin |
| Function | Central outlet |
| Item Color | Stainless |
| Material | Acid-resistant stainless steel 1.4404 |
| Outlet Dimension | Side/bottom in stainless steel in Ø75/Ø110 mm |
| Size | 600x400x100 |
| Surface | Pickled |
| Version | Do not forget grid/outlet house |
| RSK Number | 7098811 |
| Construction Height | 100 |
| Electrical Data | 51 l |
| Floor Construction | Concrete flooring |
| Floor Covering | Resin |
| Function | Central outlet |
| Item Color | Stainless |

| | |
|----------------------------|---|
| Material | Acid-resistant stainless steel 1.4404 |
| Outlet Dimension | Side/bottom in stainless steel in Ø75/Ø110 mm |
| Size | 900x600x100 |
| Surface | Pickled |
| Version | Do not forget grid/outlet house |
| RSK Number | 7098812 |
| Construction Height | 100 |
| Electrical Data | 38 l |
| Floor Construction | Concrete flooring |
| Floor Covering | Resin |
| Function | Central outlet |
| Item Color | Stainless |
| Material | Acid-resistant stainless steel 1.4404 |
| Outlet Dimension | Side/bottom in stainless steel in Ø75/Ø110 mm |
| Size | 800x500x100 |
| Surface | Pickled |
| Version | Do not forget grid/outlet house |
| RSK Number | 7098813 |

| | |
|----------------------------|---|
| Construction Height | 200 |
| Floor Construction | Concrete flooring |
| Floor Covering | Resin |
| Function | Central outlet |
| Item Color | Stainless |
| Material | Acid-resistant stainless steel 1.4404 |
| Outlet Dimension | Side/bottom in stainless steel in Ø75/Ø110 mm |
| Size | 300x300x200 |
| Surface | Pickled |
| Version | Do not forget grid/outlet house |
| RSK Number | 7098814 |
| Construction Height | 200 |
| Floor Construction | Concrete flooring |
| Floor Covering | Resin |
| Function | Central outlet |
| Item Color | Stainless |
| Material | Acid-resistant stainless steel 1.4404 |
| Outlet Dimension | Side/bottom in stainless steel in Ø75/Ø110 mm |

| | |
|----------------------------|---|
| Size | 500x300x200 |
| Surface | Pickled |
| Version | Do not forget grid/outlet house |
| RSK Number | 7098815 |
| Construction Height | 200 |
| Floor Construction | Concrete flooring |
| Floor Covering | Resin |
| Function | Central outlet |
| Item Color | Stainless |
| Material | Acid-resistant stainless steel 1.4404 |
| Outlet Dimension | Side/bottom in stainless steel in Ø75/Ø110 mm |
| Size | 800x500x200 |
| Surface | Pickled |
| Version | Do not forget grid/outlet house |
| RSK Number | 7098816 |
| Construction Height | 50 |
| Floor Construction | Concrete flooring |

| | |
|----------------------------|---|
| Floor Covering | Resin |
| Function | Central outlet |
| Item Color | Stainless |
| Material | Acid-resistant stainless steel 1.4404 |
| Outlet Dimension | Side/bottom in stainless steel in Ø75/Ø110 mm |
| Size | 1000x300x50 |
| Surface | Pickled |
| Version | Do not forget grid/outlet house |
| RSK Number | 7098817 |
| Construction Height | 100 |
| Floor Construction | Concrete flooring |
| Floor Covering | Resin |
| Function | Central outlet |
| Item Color | Stainless |
| Material | Acid-resistant stainless steel 1.4404 |
| Outlet Dimension | Side/bottom in stainless steel in Ø75/Ø110 mm |
| Size | 1200x600x100 |
| Surface | Pickled |

Version

Do not forget grid/outlet house

| Dimension (mm) | LxWxH (mm) | Dimension (mm) | LxWxH (mm) |
|----------------|-----------------|----------------|------------------|
| 500x300x50 | 503 x 303 x 50 | 1200x600x100 | 1203 x 603 x 100 |
| 1000x300x50 | 1003 x 303 x 50 | 300x300x200 | 303 x 303 x 200 |
| 400x400x100 | 403 x 403 x 100 | 500x300x200 | 503 x 303 x 200 |
| 600x400x100 | 603 x 403 x 100 | 800x500x200 | 803 x 503 x 200 |
| 800x500x100 | 803 x 503 x 100 | | |
| 900x600x100 | 903 x 603 x 100 | | |
| 900x600x200 | 903 x 603 x 200 | | |

