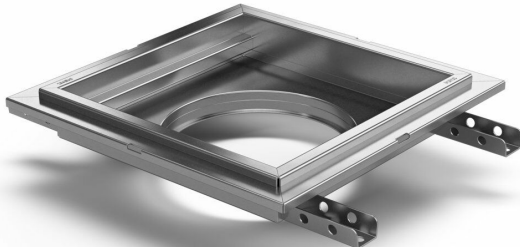


RSK 7098757

Purus channel square 200 is a floor channel made of acid-resistant stainless steel for installation in concrete flooring. The floor channel is 200×200 och är avsedd för klinkergolv som ytskikt. The floor channel needs to be supplemented with grating/grid depending on the environment and outlet house in acid-resistant stainless steel.



RSK 7098761

Purus channel square 300 is a floor channel made of acid-resistant stainless steel for installation in concrete. The floor channel is 300×300, suitable for concrete floor build-ups only. The floor channel needs to be supplemented with grating/grid depending on the environment and outlet house in acid-resistant stainless steel.

Specifications

RSK Number	7098757
Construction Height	60
Electrical Data	1,9 l
Floor Construction	Concrete flooring
Floor Covering	Tile floor with glueing flange
Function	Central outlet
Item Color	Stainless

Material	Acid-resistant stainless steel 1.4404
Outlet Dimension	Side/bottom in stainless steel in Ø75/Ø110 mm
Size	200x200x50 mm
Surface	Pickled
Version	Do not forget grid/outlet house
RSK Number	7098761
Construction Height	60
Electrical Data	3,9 l
Floor Construction	Concrete flooring
Floor Covering	Tile floor with glueing flange
Function	Central outlet
Item Color	Stainless
Material	Acid-resistant stainless steel 1.4404
Outlet Dimension	Side/bottom in stainless steel in Ø75/Ø110 mm
Size	300x300x50 mm
Surface	Pickled
Version	Do not forget grid/outlet house

Dimension (mm)	LxW (mm)	Ø (mm)
200x200	203x203	150
300x300	303x303	220

