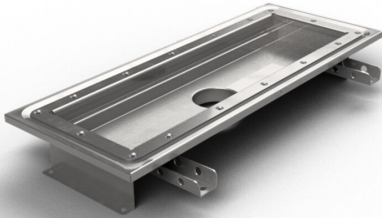


## RSK 7097012

Purus channel 150 is a channel made of acid-resistant stainless steel for installation in concrete floors. The channel has a central outlet and is intended for vinyl floors as a surface layer. Supplement with gully base in plastic or acid-resistant stainless steel and mesh grate for higher load classes or grating for K3 (300 kg) load.



## RSK 7097013

Purus channel 150 is a channel made of acid-resistant stainless steel for installation in concrete floors. The channel has a central outlet and is intended for vinyl floors as a surface layer. Supplement with gully base in plastic or acid-resistant stainless steel and mesh grate for higher load classes or grating for K3 (300 kg) load.

## RSK 7097014

Purus channel 150 is a channel made of acid-resistant stainless steel for installation in concrete floors. The channel has a central outlet and is intended for vinyl floors as a surface layer. Supplement with gully base in plastic or acid-resistant stainless steel and mesh grate for higher load classes or grating for K3 (300 kg) load.

## RSK 7103056

Purus channel 150 is a channel made of acid-resistant stainless steel for installation in concrete floors. The channel has a central outlet and is intended for vinyl floors as a

surface layer. Supplement with gully base in plastic or acid-resistant stainless steel and mesh grate for higher load classes or grating for K3 (300 kg) load.

#### RSK 7103060

Purus channel 150 is a channel made of acid-resistant stainless steel for installation in concrete floors. The channel has a central outlet and is intended for vinyl floors as a surface layer. Supplement with gully base in plastic or acid-resistant stainless steel and mesh grate for higher load classes or grating for K3 (300 kg) load.

#### RSK 7103057

Purus channel 150 is a channel made of acid-resistant stainless steel for installation in concrete floors. The channel has a central outlet and is intended for vinyl floors as a surface layer. Supplement with gully base in plastic or acid-resistant stainless steel and mesh grate for higher load classes or grating for K3 (300 kg) load.

#### RSK 7103058

Purus channel 150 is a channel made of acid-resistant stainless steel for installation in concrete floors. The channel has a central outlet and is intended for vinyl floors as a surface layer. Supplement with gully base in plastic or acid-resistant stainless steel and mesh grate for higher load classes or grating for K3 (300 kg) load.

#### RSK 7103059

Purus channel 150 is a channel made of acid-resistant stainless steel for installation in concrete floors. The channel has a central outlet and is intended for vinyl floors as a surface layer. Supplement with gully base in plastic or acid-resistant stainless steel and mesh grate for higher load classes or grating for K3 (300 kg) load.

**RSK 7103061**

Purus channel 150 is a channel made of acid-resistant stainless steel for installation in concrete floors. The channel has a central outlet and is intended for vinyl floors as a surface layer. Supplement with gully base in plastic or acid-resistant stainless steel and mesh grate for higher load classes or grating for K3 (300 kg) load.

**RSK 7103062**

Purus channel 150 is a channel made of acid-resistant stainless steel for installation in concrete floors. The channel has a central outlet and is intended for vinyl floors as a surface layer. Supplement with gully base in plastic or acid-resistant stainless steel and mesh grate for higher load classes or grating for K3 (300 kg) load.

**RSK 7103063**

Purus channel 150 is a channel made of acid-resistant stainless steel for installation in concrete floors. The channel has a central outlet and is intended for vinyl floors as a surface layer. Supplement with gully base in plastic or acid-resistant stainless steel and mesh grate for higher load classes or grating for K3 (300 kg) load.

RSK 7103064

Purus channel 150 is a channel made of acid-resistant stainless steel for installation in concrete floors. The channel has a central outlet and is intended for vinyl floors as a surface layer. Supplement with gully base in plastic or acid-resistant stainless steel and mesh grate for higher load classes or grating for K3 (300 kg) load.

## Specifications

|                            |   |
|----------------------------|---|
| <b>RSK Number</b>          | 7097012   |
| <b>Construction Height</b> | 52  |
| <b>Floor Construction</b>  | Concrete flooring   |
| <b>Floor Covering</b>      | Vinyl   |
| <b>Function</b>            | Central outlet  |
| <b>Item Color</b>          | Stainless   |
| <b>Material</b>            | Acid-resistant stainless steel 1.4404                             |
| <b>Outlet Dimension</b>    | Bottom/side in plastic or stainless steel in Ø50, Ø75 or Ø 110 mm |
| <b>Size</b>                | 800×150 mm  |
| <b>Surface</b>             | Pickled   |
| <b>Version</b>             | Do not forget grid/outlet house                                   |
| <b>RSK Number</b>          | 7097013   |

|                            |   |
|----------------------------|---|
| <b>Construction Height</b> | 52  |
| <b>Floor Construction</b>  | Concrete flooring   |
| <b>Floor Covering</b>      | Vinyl   |
| <b>Function</b>            | Central outlet  |
| <b>Item Color</b>          | Stainless   |
| <b>Material</b>            | Acid-resistant stainless steel 1.4404                             |
| <b>Outlet Dimension</b>    | Bottom/side in plastic or stainless steel in Ø50, Ø75 or Ø 110 mm |
| <b>Size</b>                | 1000×150 mm   |
| <b>Surface</b>             | Pickled   |
| <b>Version</b>             | Do not forget grid/outlet house                                   |
| <b>RSK Number</b>          | 7097014   |
| <b>Construction Height</b> | 52  |
| <b>Floor Construction</b>  | Concrete flooring   |
| <b>Floor Covering</b>      | Vinyl   |
| <b>Function</b>            | Central outlet  |
| <b>Item Color</b>          | Stainless   |
| <b>Material</b>            | Acid-resistant stainless steel 1.4404                             |
| <b>Outlet Dimension</b>    | Bottom/side in plastic or stainless steel in Ø50, Ø75 or Ø 110 mm |

|                            |   |
|----------------------------|---|
| <b>Size</b>                | 1200×150 mm   |
| <b>Surface</b>             | Pickled   |
| <b>Version</b>             | Do not forget grid/outlet house                                   |
| <b>RSK Number</b>          | 7103056   |
| <b>Construction Height</b> | 52  |
| <b>Floor Construction</b>  | Concrete flooring   |
| <b>Floor Covering</b>      | Vinyl   |
| <b>Function</b>            | Central outlet  |
| <b>Item Color</b>          | Stainless   |
| <b>Material</b>            | Acid-resistant stainless steel 1.4404                             |
| <b>Outlet Dimension</b>    | Bottom/side in plastic or stainless steel in Ø50, Ø75 or Ø 110 mm |
| <b>Size</b>                | 500×150 mm  |
| <b>Surface</b>             | Pickled   |
| <b>Version</b>             | Do not forget grid/outlet house                                   |
| <b>RSK Number</b>          | 7103060   |
| <b>Construction Height</b> | 52  |
| <b>Floor Construction</b>  | Concrete flooring   |

|                            |   |
|----------------------------|---|
| <b>Floor Covering</b>      | Vinyl   |
| <b>Function</b>            | Central outlet  |
| <b>Item Color</b>          | Stainless   |
| <b>Material</b>            | Acid-resistant stainless steel 1.4404                             |
| <b>Outlet Dimension</b>    | Bottom/side in plastic or stainless steel in Ø50, Ø75 or Ø 110 mm |
| <b>Size</b>                | 1300×150 mm   |
| <b>Surface</b>             | Pickled   |
| <b>Version</b>             | Do not forget grid/outlet house                                   |
| <b>RSK Number</b>          | 7103057   |
| <b>Construction Height</b> | 52  |
| <b>Floor Construction</b>  | Concrete flooring   |
| <b>Floor Covering</b>      | Vinyl   |
| <b>Function</b>            | Central outlet  |
| <b>Item Color</b>          | Stainless   |
| <b>Material</b>            | Acid-resistant stainless steel 1.4404                             |
| <b>Outlet Dimension</b>    | Bottom/side in plastic or stainless steel in Ø50, Ø75 or Ø 110 mm |
| <b>Size</b>                | 600×150 mm  |
| <b>Surface</b>             | Pickled   |

|                            |   |
|----------------------------|---|
| <b>Version</b>             | Do not forget grid/outlet house                                   |
| <b>RSK Number</b>          | 7103058   |
| <b>Construction Height</b> | 52  |
| <b>Floor Construction</b>  | Concrete flooring   |
| <b>Floor Covering</b>      | Vinyl   |
| <b>Function</b>            | Central outlet  |
| <b>Item Color</b>          | Stainless   |
| <b>Material</b>            | Acid-resistant stainless steel 1.4404                             |
| <b>Outlet Dimension</b>    | Bottom/side in plastic or stainless steel in Ø50, Ø75 or Ø 110 mm |
| <b>Size</b>                | 900×150 mm  |
| <b>Surface</b>             | Pickled   |
| <b>Version</b>             | Do not forget grid/outlet house                                   |
| <b>RSK Number</b>          | 7103059   |
| <b>Construction Height</b> | 52  |
| <b>Floor Construction</b>  | Concrete flooring   |
| <b>Floor Covering</b>      | Vinyl   |
| <b>Function</b>            | Central outlet  |



|                            |   |
|----------------------------|---|
| <b>Item Color</b>          | Stainless   |
| <b>Material</b>            | Acid-resistant stainless steel 1.4404                             |
| <b>Outlet Dimension</b>    | Bottom/side in plastic or stainless steel in Ø50, Ø75 or Ø 110 mm |
| <b>Size</b>                | 1100×150 mm   |
| <b>Surface</b>             | Pickled   |
| <b>Version</b>             | Do not forget grid/outlet house                                   |
| <b>RSK Number</b>          | 7103061   |
| <b>Construction Height</b> | 52  |
| <b>Floor Construction</b>  | Concrete flooring   |
| <b>Floor Covering</b>      | Vinyl   |
| <b>Function</b>            | Central outlet  |
| <b>Item Color</b>          | Stainless   |
| <b>Material</b>            | Acid-resistant stainless steel 1.4404                             |
| <b>Outlet Dimension</b>    | Bottom/side in plastic or stainless steel in Ø50, Ø75 or Ø 110 mm |
| <b>Size</b>                | 1400×150 mm   |
| <b>Surface</b>             | Pickled   |
| <b>Version</b>             | Do not forget grid/outlet house                                   |
| <b>RSK Number</b>          | 7103062   |

|                            |   |
|----------------------------|---|
| <b>Construction Height</b> | 52  |
| <b>Floor Construction</b>  | Concrete flooring   |
| <b>Floor Covering</b>      | Vinyl   |
| <b>Function</b>            | Central outlet  |
| <b>Item Color</b>          | Stainless   |
| <b>Material</b>            | Acid-resistant stainless steel 1.4404                             |
| <b>Outlet Dimension</b>    | Bottom/side in plastic or stainless steel in Ø50, Ø75 or Ø 110 mm |
| <b>Size</b>                | 1500×150 mm   |
| <b>Surface</b>             | Pickled   |
| <b>Version</b>             | Do not forget grid/outlet house                                   |
| <b>RSK Number</b>          | 7103063   |
| <b>Construction Height</b> | 52  |
| <b>Floor Construction</b>  | Concrete flooring   |
| <b>Floor Covering</b>      | Vinyl   |
| <b>Function</b>            | Central outlet  |
| <b>Item Color</b>          | Stainless   |
| <b>Material</b>            | Acid-resistant stainless steel 1.4404                             |
| <b>Outlet Dimension</b>    | Bottom/side in plastic or stainless steel in Ø50, Ø75 or Ø 110 mm |

|                            |   |
|----------------------------|---|
| <b>Size</b>                | 2000×150 mm   |
| <b>Surface</b>             | Pickled   |
| <b>Version</b>             | Do not forget grid/outlet house                                   |
| <b>RSK Number</b>          | 7103064   |
| <b>Construction Height</b> | 52  |
| <b>Floor Construction</b>  | Concrete flooring   |
| <b>Floor Covering</b>      | Vinyl   |
| <b>Function</b>            | Central outlet  |
| <b>Item Color</b>          | Stainless   |
| <b>Material</b>            | Acid-resistant stainless steel 1.4404                             |
| <b>Outlet Dimension</b>    | Bottom/side in plastic or stainless steel in Ø50, Ø75 or Ø 110 mm |
| <b>Size</b>                | 2500×150 mm   |
| <b>Surface</b>             | Pickled   |
| <b>Version</b>             | Do not forget grid/outlet house                                   |

| Dimension (mm) | LxW (mm) | H (mm) |
|----------------|----------|--------|
| 500x150        | 502x151  | 66,3   |
| 600x150        | 602x151  | 66,3   |
| 800x150        | 802x151  | 66,3   |
| 900x150        | 905x151  | 66,3   |
| 1000x150       | 1002x151 | 66,3   |
| 1100x150       | 1102x151 | 71,3   |
| 1200x150       | 1202x151 | 71,3   |
| 1300x150       | 1302x151 | 71,3   |
| 1400x150       | 1402x151 | 71,3   |
| 1500x150       | 1502x151 | 71,3   |
| 2000x150       | 2002x151 | 76,3   |
| 2500x150       | 2502x151 | 76,3   |

