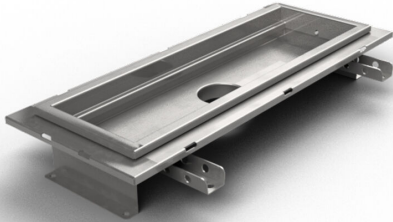


RSK 7097018

Purus channel 150 is a channel made of acid-resistant stainless steel for installation in concrete floors. The channel has a central outlet and is intended for tiled floors as a surface layer. Supplement with gully base in plastic or acid-resistant stainless steel and mesh grate for higher load classes or grating for K3 (300 kg) load.



RSK 7097019

Purus channel 150 is a channel made of acid-resistant stainless steel for installation in concrete floors. The channel has a central outlet and is intended for tiled floors as a surface layer. Supplement with gully base in plastic or acid-resistant stainless steel and mesh grate for higher load classes or grating for K3 (300 kg) load.

RSK 7097020

Purus channel 150 is a channel made of acid-resistant stainless steel for installation in concrete floors. The channel has a central outlet and is intended for tiled floors as a surface layer. Supplement with gully base in plastic or acid-resistant stainless steel and mesh grate for higher load classes or grating for K3 (300 kg) load.

RSK 7103038

Purus channel 150 is a channel made of acid-resistant stainless steel for installation in concrete floors. The channel has a central outlet and is intended for tiled floors as a

surface layer. Supplement with gully base in plastic or acid-resistant stainless steel and mesh grate for higher load classes or grating for K3 (300 kg) load.

RSK 7103042

Purus channel 150 is a channel made of acid-resistant stainless steel for installation in concrete floors. The channel has a central outlet and is intended for tiled floors as a surface layer. Supplement with gully base in plastic or acid-resistant stainless steel and mesh grate for higher load classes or grating for K3 (300 kg) load.

RSK 7103039

Purus channel 150 is a channel made of acid-resistant stainless steel for installation in concrete floors. The channel has a central outlet and is intended for tiled floors as a surface layer. Supplement with gully base in plastic or acid-resistant stainless steel and mesh grate for higher load classes or grating for K3 (300 kg) load.

RSK 7103040

Purus channel 150 is a channel made of acid-resistant stainless steel for installation in concrete floors. The channel has a central outlet and is intended for tiled floors as a surface layer. Supplement with gully base in plastic or acid-resistant stainless steel and mesh grate for higher load classes or grating for K3 (300 kg) load.

RSK 7103041

Purus channel 150 is a channel made of acid-resistant stainless steel for installation in concrete floors. The channel has a central outlet and is intended for tiled floors as a surface layer. Supplement with gully base in plastic or acid-resistant stainless steel and mesh grate for higher load classes or grating for K3 (300 kg) load.

RSK 7103043

Purus channel 150 is a channel made of acid-resistant stainless steel for installation in concrete floors. The channel has a central outlet and is intended for tiled floors as a surface layer. Supplement with gully base in plastic or acid-resistant stainless steel and mesh grate for higher load classes or grating for K3 (300 kg) load.

RSK 7103044

Purus channel 150 is a channel made of acid-resistant stainless steel for installation in concrete floors. The channel has a central outlet and is intended for tiled floors as a surface layer. Supplement with gully base in plastic or acid-resistant stainless steel and mesh grate for higher load classes or grating for K3 (300 kg) load.

RSK 7103045

Purus channel 150 is a channel made of acid-resistant stainless steel for installation in concrete floors. The channel has a central outlet and is intended for tiled floors as a surface layer. Supplement with gully base in plastic or acid-resistant stainless steel and mesh grate for higher load classes or grating for K3 (300 kg) load.

RSK 7103046

Purus channel 150 is a channel made of acid-resistant stainless steel for installation in concrete floors. The channel has a central outlet and is intended for tiled floors as a surface layer. Supplement with gully base in plastic or acid-resistant stainless steel and mesh grate for higher load classes or grating for K3 (300 kg) load.

Specifications

RSK Number	7097018
Construction Height	52
Floor Construction	Concrete flooring
Floor Covering	Tile floor with glueing flange
Function	Central outlet
Item Color	Stainless
Material	Acid-resistant stainless steel 1.4404
Outlet Dimension	Bottom/side in plastic or stainless steel in Ø50, Ø75 or Ø 110 mm
Size	800×150 mm
Surface	Pickled
Version	Do not forget grid/outlet house
RSK Number	7097019

Construction Height	52
Floor Construction	Concrete flooring
Floor Covering	Tile floor with glueing flange
Function	Central outlet
Item Color	Stainless
Material	Acid-resistant stainless steel 1.4404
Outlet Dimension	Bottom/side in plastic or stainless steel in Ø50, Ø75 or Ø 110 mm
Size	1000×150 mm
Surface	Pickled
Version	Do not forget grid/outlet house
RSK Number	7097020
Construction Height	52
Floor Construction	Concrete flooring
Floor Covering	Tile floor with glueing flange
Function	Central outlet
Item Color	Stainless
Material	Acid-resistant stainless steel 1.4404
Outlet Dimension	Bottom/side in plastic or stainless steel in Ø50, Ø75 or Ø 110 mm

Size	1200×150 mm
Surface	Pickled
Version	Do not forget grid/outlet house
RSK Number	7103038
Construction Height	52
Floor Construction	Concrete flooring
Floor Covering	Tile floor with glueing flange
Function	Central outlet
Item Color	Stainless
Material	Acid-resistant stainless steel 1.4404
Outlet Dimension	Bottom/side in plastic or stainless steel in Ø50, Ø75 or Ø 110 mm
Size	500×150 mm
Surface	Pickled
Version	Do not forget grid/outlet house
RSK Number	7103042
Construction Height	52
Floor Construction	Concrete flooring

Floor Covering	Tile floor with glueing flange
Function	Central outlet
Item Color	Stainless
Material	Acid-resistant stainless steel 1.4404
Outlet Dimension	Bottom/side in plastic or stainless steel in Ø50, Ø75 or Ø 110 mm
Size	1300×150 mm
Surface	Pickled
Version	Do not forget grid/outlet house
RSK Number	7103039
Construction Height	52
Floor Construction	Concrete flooring
Floor Covering	Tile floor with glueing flange
Function	Central outlet
Item Color	Stainless
Material	Acid-resistant stainless steel 1.4404
Outlet Dimension	Bottom/side in plastic or stainless steel in Ø50, Ø75 or Ø 110 mm
Size	600×150 mm
Surface	Pickled

Version	Do not forget grid/outlet house
RSK Number	7103040
Construction Height	52
Floor Construction	Concrete flooring
Floor Covering	Tile floor with glueing flange
Function	Central outlet
Item Color	Stainless
Material	Acid-resistant stainless steel 1.4404
Outlet Dimension	Bottom/side in plastic or stainless steel in Ø50, Ø75 or Ø 110 mm
Size	900×150 mm
Surface	Pickled
Version	Do not forget grid/outlet house
RSK Number	7103041
Construction Height	52
Floor Construction	Concrete flooring
Floor Covering	Tile floor with glueing flange
Function	Central outlet

Item Color	Stainless
Material	Acid-resistant stainless steel 1.4404
Outlet Dimension	Bottom/side in plastic or stainless steel in Ø50, Ø75 or Ø 110 mm
Size	1100×150 mm
Surface	Pickled
Version	Do not forget grid/outlet house
RSK Number	7103043
Construction Height	52
Floor Construction	Concrete flooring
Floor Covering	Tile floor with glueing flange
Function	Central outlet
Item Color	Stainless
Material	Acid-resistant stainless steel 1.4404
Outlet Dimension	Bottom/side in plastic or stainless steel in Ø50, Ø75 or Ø 110 mm
Size	1400×150 mm
Surface	Pickled
Version	Do not forget grid/outlet house
RSK Number	7103044

Construction Height	52
Floor Construction	Concrete flooring
Floor Covering	Tile floor with glueing flange
Function	Central outlet
Item Color	Stainless
Material	Acid-resistant stainless steel 1.4404
Outlet Dimension	Bottom/side in plastic or stainless steel in Ø50, Ø75 or Ø 110 mm
Size	1500×150 mm
Surface	Pickled
Version	Do not forget grid/outlet house
RSK Number	7103045
Construction Height	52
Floor Construction	Concrete flooring
Floor Covering	Tile floor with glueing flange
Function	Central outlet
Item Color	Stainless
Material	Acid-resistant stainless steel 1.4404
Outlet Dimension	Bottom/side in plastic or stainless steel in Ø50, Ø75 or Ø 110 mm

Size	2000×150 mm
Surface	Pickled
Version	Do not forget grid/outlet house
RSK Number	7103046
Construction Height	52
Floor Construction	Concrete flooring
Floor Covering	Tile floor with glueing flange
Function	Central outlet
Item Color	Stainless
Material	Acid-resistant stainless steel 1.4404
Outlet Dimension	Bottom/side in plastic or stainless steel in Ø50, Ø75 or Ø 110 mm
Size	2500×150 mm
Surface	Pickled
Version	Do not forget grid/outlet house

Dimension (mm)	LxW (mm)	H (mm)
500x150	502x151	66,3
600x150	602x151	66,3
800x150	802x151	66,3
900x150	905x151	66,3
1000x150	1002x151	66,3
1100x150	1102x151	71,3
1200x150	1202x151	71,3
1300x150	1302x151	71,3
1400x150	1402x151	71,3
1500x150	1502x151	71,3
2000x150	2002x151	76,3
2500x150	2502x151	76,3

