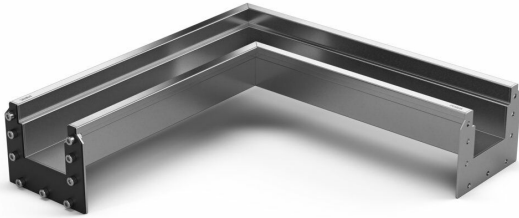


RSK 7098858



Purus channel 100 modul L-angle 65 is a floor channel made of acid-resistant stainless steel for installation in concrete. The floor channel is intended for concrete, epoxy and tile floors without a waterproofing membrane. The floor channel is 100 mm wide and has a built-in fall of which the height is 65 mm and length 500×500 mm. The floor channel is delivered with gasket and screw connection for installation but needs to be supplemented with grid depending on the environment and outlet house. The total height with screw joints is 129 mm.

RSK 7098859

Purus channel 100 modul L-angle 80 is a floor channel made of acid-resistant stainless steel for installation in concrete. The floor channel is intended for concrete, epoxy and tile floors without a waterproofing membrane. The floor channel is 100 mm wide and has a built-in fall of which the height is 80 mm and length 500×500 mm. The floor channel is delivered with gasket and screw connection for installation but needs to be supplemented with grid depending on the environment and outlet house. The total height with screw joints is 129 mm.

RSK 7098860

Purus channel 100 modul L-angle 95 is a floor channel made of acid-resistant stainless steel for installation in concrete. The floor channel is intended for concrete, epoxy and tile floors without a

waterproofing membrane. The floor channel is 100 mm wide and has a built-in fall of which the height is 95 mm and length 500x500 mm. The floor channel is delivered with gasket and screw connection for installation but needs to be supplemented with grid depending on the environment and outlet house. The total height with screw joints is 129 mm.

Specifications

RSK Number	7098858
Floor Construction	Concrete flooring
Floor Covering	Concrete
Function	With slope
Item Color	Stainless
Material	Acid-resistant stainless steel 1.4404
Size	500x500x100 mm
Surface	Pickled
Version	Do not forget grid/grating
RSK Number	7098859
Floor Construction	Concrete flooring
Floor Covering	Concrete
Function	With slope
Item Color	Stainless

Material	Acid-resistant stainless steel 1.4404
Size	500x500x100 mm
Surface	Pickled
Version	Do not forget grid/grating

RSK Number	7098860
-------------------	---------

Floor Construction	Concrete flooring
---------------------------	-------------------

Floor Covering	Concrete
-----------------------	----------

Function	With slope
-----------------	------------

Item Color	Stainless
-------------------	-----------

Material	Acid-resistant stainless steel 1.4404
-----------------	---------------------------------------

Size	500x500x100 mm
-------------	----------------

Surface	Pickled
----------------	---------

Version	Do not forget grid/grating
----------------	----------------------------

