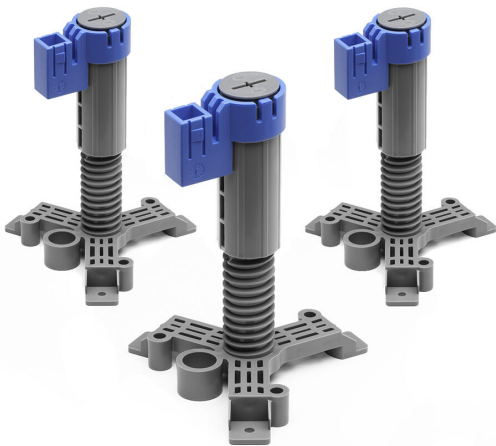


RSK 7129929



The Bifrost installation support consists of 3 legs and is designed for installation of Purus' plastic floor drains with side brackets in concrete floors. The support legs are adjustable between 155-210mm, and can also be cut down to 65mm. The support feet have four different installation options: nail gun and washer; screw and plug; nail plug; EPS fastener and nail; or alternatively can be fixed and fastened. The Bifrost support does not fit the Brage, Mini Brage, Loki or Flex as these drains do not have side brackets. For installation of these, we recommend The Midgård installation support.

Specifications

RSK Number	7129929
Floor Construction	Concrete flooring
Material	ABS, PP
Version	Adjustable height
Item Color	Grey
Function	For installation in concrete floor

